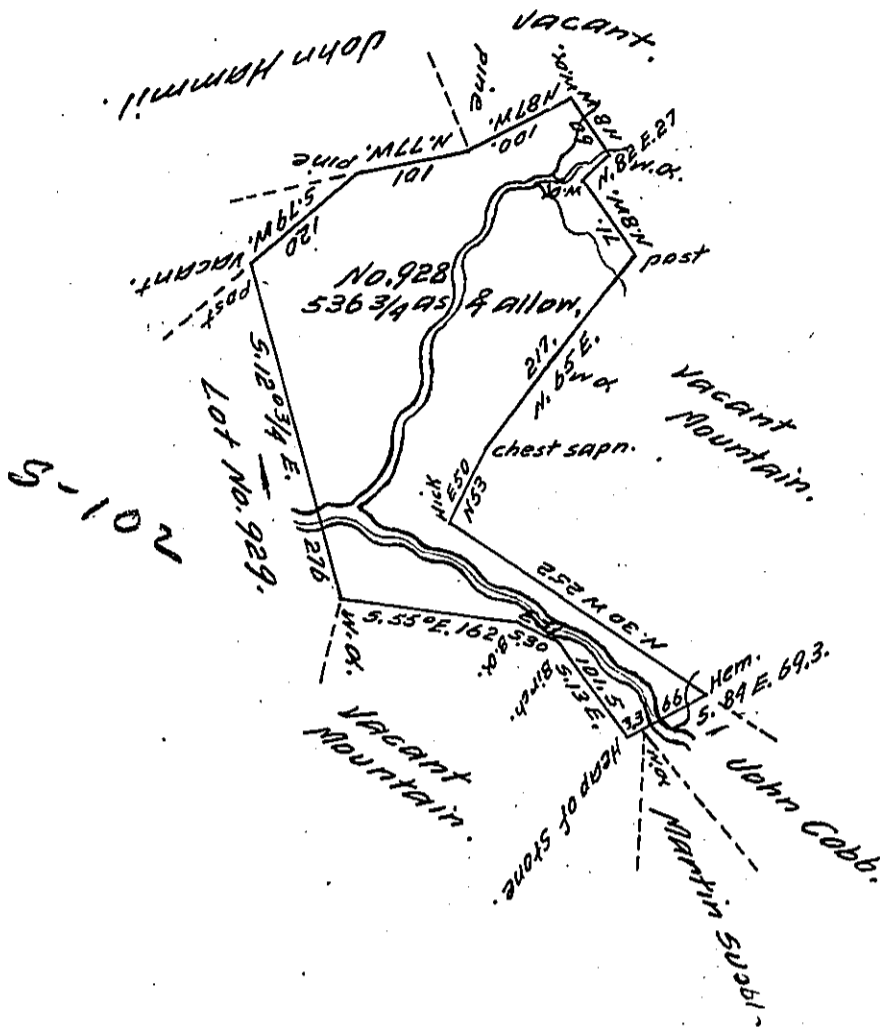


W



A Draft of a tract of land called — Situate on Nescopeck  
 Creek below and in the gap of Nescopeck Mountain.  
 Joining Land Surveyed for John Cobb & others in  
 Luzerne County. Containing five Hundred & thirty six  
 acres  $\frac{3}{4}$  & allowance of six p. Cent for roads &ca.  
 Surveyed for the Ministers, Trustees, Elders and Deacons,  
 of the German reformed congregation of the City of  
 Philada. the 2d. Day of June 1790 in Pursuance of  
 an act of Genl. Assembly passed 23d Day of Septr  
 1789 and a warrant to me Directed Dated the 18th  
 Day of March 1790 No. 928. by Wm Gray D. S.  
 To Daniel Brodhead Esqr.  
 Survr Genl.

IN TESTIMONY that the above is a copy of the original remaining on file in  
 the Department of Internal Affairs of Pennsylvania, made  
 conformably to an Act of Assembly approved the 16th day of  
 February, 1833, I have hereunto set my Hand and caused  
 the Seal of said Department to be affixed at Harrisburg,  
 this twentieth day of June 1911

*Henry Houck*  
 Secretary of Internal Affairs.